

Cross stitch pattern for a needlecase or sampler

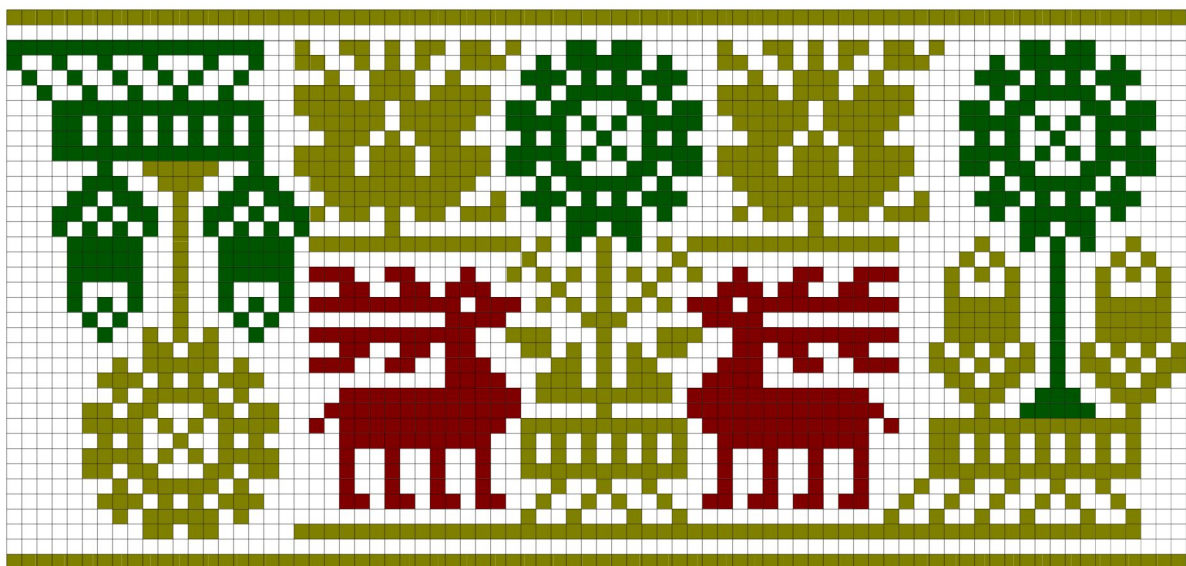
Pattern drafted by Shannon Wanty, known in the SCA as Lady Caterine de Vantier

Taken from the German sampler by Lucke Boten, 1618

Victoria & Albert Museum (catalogue number T.41-1951)

<http://collections.vam.ac.uk/item/O70238/sampler-boten-lucke/>

Notes on this piece: The original sampler is worked in linen and silk on linen. I am unsure whether this particular piece is worked in silk or linen. I originally drafted this from a small black and white photocopy taken from a V&A book of samplers. Above is my redraft of the original from a high resolution download from the V&A website. The original was worked at approximately double the size of the square deer/flower pattern panel on the same sampler. Notice that the acorn on the right hand side of the piece is warped: this is because the artist ran into their drawn thread border at this point and could not quite fit it in correctly. Below is a redraft of my original pattern, in the colours that I used to work my needlecase, with minor alterations to correct the pattern based on the higher resolution image I now have access to. The bar along the top is actually part of the next pattern, but adds a nice frame to the piece. I worked my version at the same scale as for the square panel.



This work is licensed under a
Creative Commons Attribution-NonCommercial 3.0 Unported License.